

2025 Events & Workshops Calendar

Individuals, students, families and organizations are encouraged to get involved in conservation efforts by participating in our programs. We can tailor programs to the needs of your school, club or civic organization and we also offer CEUs for municipal workers, trades and businesses through several of our workshops. Mark your calendars!

February

Fruit Tree PRE-SALE *online ordering open Jan 30th-Feb 13th*

Maple Sugaring Workshop at *Tupper & Friends Maple, Cornville, ME*

February 15th 10am-12pm

March

Fly Fishing Film Festival

March 7th-8th, Dover-Foxcroft

Tree & Plant Sale Ordering Open *March 10th-May 1st*

Trout Sale Ordering Open *March 17th-May 14th*

April

Mushroom Inoculation Course, Details TBD

May

Apple Tree Top-Working Workshop *May 3rd*

Parkman ME

Bird Walk at *Law Farm Nature Trails with Maine Audubon*

May 17th 8am-10am

PCSWCD Annual Tree & Plant Sale Pick Up! *May 15th at Law Farm, 4:30-6:30pm*

Trout Sale Pick Up, *May 21st USDA Service Center DF 12PM*

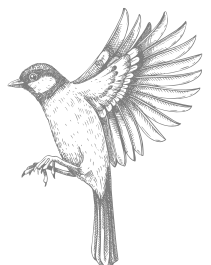
June

Mushroom Identification Workshop *June 12th 1:30pm*

Thompson Free Library, Dover-Foxcroft

Invasive Plant Workshop

Monson, Details TBD



July

Teen Wilderness Expedition at AMC's Gorman Chairback Lodge, July 15th-17th

August

Foraging at Williamsburg Forest, August 9th 10-12pm or 1-3pm

September

Cider Pressing with East Sangerville Grange, September 14th, East Sangerville Grange

Women's Chainsaw Safety Course

at Williamsburg Forest, September 27th & 28th

October

Green Jobs Fair Details TBD

November

Holiday Mini Photo Shoot at the Law Farm Nature Trails, Details TBD

December

Local Working Group Details TBD

Technical Services

LakeSmart: This free program is available to waterfront property owners looking to protect water bodies from damaging soil erosion. PCSWCD is a hub for LakeSmart, sharing watershed knowledge and technical capacity to support lake association volunteer programs and educate homeowners about Nonpoint Source (NPS) Pollution and remediate NPS pollution sources in the hub's lake shore lands. Call or email Kacey at the PCSWCD FMI.

Education & Outreach

Is your school, club or youth organization interested in learning more about natural resources? The PCSWCD has a fantastic hands-on presentations that we want to share with you! For more information or to learn with us in the outdoors contact Dustin at the PCSWCD.

USDA Service Center, 42 Engdahl Drive, Dover-Foxcroft, ME 04426

Visit our website! www.piscataquisswcd.org Follow us on Facebook!

www.facebook.com/www.piscataquisswcd.org

Phone: (207) 564-2321 ext. 3 Email: info@piscataquisswcd.org

Check us out on instagram! [#piscataquiscountyswcd](https://www.instagram.com/piscataquiscountyswcd)

Visit our Public Lands!

Law Farm Nature Trails located on Lee Cemetery Rd

Dover-Foxcroft, ME

Williamsburg Forest in Williamsburg Twshp



Our mission is to build resilient, sustainable farms and forests through education, technical services, demonstration and stewardship.