



Photo: Billy London (2nd from left) of William W. London & Son is pictured with his family as he receives PCSWCD's 2024 Cooperator of the Year award. For more on this award and additional PCSWCD awards, please see page 15 of this report.

# 2024 ANNUAL REPORT

**Our mission is to build resilient, sustainable farms and forests through education, technical services, demonstration, and stewardship.**

## **In This Issue:**

- USDA Service Center Staff & PCSWCD Board
- Message from Board Chair
- PCSWCD Financials
- Conservation Conversation
- Spotlight on our Partners
- Education Overview
- USDA Office Reports
- Stream Restoration Project Update
- 2024 PCSWCD Awards
- 2025 Annual Appeal
- PCSWCD Events & Services

## **Additional Information:**

**Thank you to our Donors,  
Sponsors & PCSWCD  
Advertisers! Please support  
these local businesses!**

**Fruit Tree Pre-Sale Order Deadline  
Feb. 13th!**

**Tree & Plant Sale Order Deadline:  
May 1st!**

**Trout Sale Order Deadline May 14th!**

Join us for an event this year!  
[www.piscataquisswcd.org](http://www.piscataquisswcd.org)



# PISCATAQUIS COUNTY SOIL & WATER CONSERVATION DISTRICT

## USDA SERVICE CENTER

42 ENGDAHL DRIVE

DOVER-FOXCROFT, ME 04426

PHONE (207) 564 - 2321

EMAIL: [INFO@PISCATAQUISSWCD.ORG](mailto:INFO@PISCATAQUISSWCD.ORG)

WEBSITE: [WWW.PISCATAQUISSWCD.ORG](http://WWW.PISCATAQUISSWCD.ORG)

FACEBOOK: [FACEBOOK.COM/WWW.PISCATAQUISSWCD.ORG](https://FACEBOOK.COM/WWW.PISCATAQUISSWCD.ORG)

INSTAGRAM: [INSTAGRAM.COM/PISCATAQUISCOUNTYSWCD](https://INSTAGRAM.COM/PISCATAQUISCOUNTYSWCD)

## PCSWCD Staff Members

Left to right: Kacey Weber, Executive Director; Dustin Small, Education Coordinator; Caitlin Maguire, Stream Restoration Project Manager



## PCSWCD Board of Supervisors

left to right, top to bottom: Jensen Bissell, Chair; Steve Tatko; Sam Brown; Jim Ferrante, Vice Chair; Kent Black; Mike Pouch; Molly London; Toby Hall; Arthur Wilkins; Alani Worden; Carolyn Ziegler



## NATURAL RESOURCES CONSERVATION SERVICE STAFF:

Carl Bickford, District Conservationist; Caley Rentz, Soil Conservationist; Alaina Kresovic, Soil Scientist; Joshua Dera, Soil Scientist; Chris Mann, MLRA Soil Survey Leader, Ecologist

## FARM SERVICE AGENCY STAFF:

Scott Speck, Executive Director; Madison Thew, Program Analyst

## FARM SERVICE AGENCY COUNTY COMMITTEE:

Blake Smith; Owen Brown; Rebecca Treadwell

## MESSAGE FROM PCSWCD BOARD CHAIR

On behalf of the Board of Supervisors and Staff, I am pleased to present the PCSWCD 2024 Annual Report. This report is a summary of our efforts over the past year, but it's only a pale representation of the actual expertise, energy, and community spirit of our staff as we worked to connect forest and farmland owners to resources to help them better manage their lands, provide natural resource education to schools, and adults, and provide outdoor opportunities on our lands in Piscataquis County. The autumn of 2024 saw the departure of our Executive Director Sarah Robinson. Sarah's work helped grow the PCSWCD in many ways, and we wish her well in her new work. Late in 2024 the District promoted Education Coordinator Katherine (Kacey) Weber to the Executive Director position. Kacey has taken the reins and will lead the District effectively in the future.

I'm proud to work with such a great group of people, and I invite you to read our report -perhaps you will want to join in!

Best, Jensen Bissell, Board Chair

# PCSWCD OPERATIONS OVERVIEW

## TASKS COMPLETED BY PCSWCD IN 2024



### WORKSHOPS

500 people reached through 20 workshops and events that focused on wildlife, forestry, land management, and water quality. Free or low-cost registration with support from sponsorships or private funders.



### PUBLIC LANDS

Managed 400 acres of community forests. Enhanced trail systems at the Law Farm and Williamsburg Forest with help from community members and grants from the Maine Community Foundation and the John Sage Foundation.



### EDUCATION

Worked with SeDoMoCha, Penquis Valley Schools, Piscataquis Community schools, Greenville Consolidated Schools and students with TriCounty Technical Center reaching 1,500 students. UMaine School of Forest Resources Partnership Onion Foundation grant TNC Private Award



### TECHNICAL SERVICES

91 customers for 2024 Tree & Plant Sale  
22 customers through Trout Sale  
20 LakeSmart evaluations and a presentation to Sebec Lake Association.



### STREAM RESTORATION

18 Road-Stream Crossing assessments for 8 landowners  
Oversaw construction alongside 2 different contractors on a total of 4 AOP projects  
Assisted with 17 surveys in Piscataquis County  
38 Stream Miles opened in the last 3 years



### NRCS COLLABORATION

PCSWCD are the "boots on the ground" connection to NRCS and FSA cost-share programs that assist land owners financially and help address natural resource concerns.

**READ OUR STATE FUNDING REPORT HERE:**

*click here!*

**[PCSWCD State Funding Report](#)**

PISCATAQUIS COUNTY SOIL & WATER CONSERVATION DISTRICT – FY25 BUDGET SUMMARY								2024 BUDGET
	100 TNC	300 Sales/Services	400 Workshops/Programs	500 Fundraising	Onion Fdn Grant	900 Admin	Total	
<b>Revenue:</b>								
Government Grants						51,000	51,000	48,411
Other Grants	78,392		2,606		12,500		93,498	84,014
Donations				1,261		500	1,761	500
Sales & Services		17,050		1,365			18,415	22,300
Workshop & Program Fees	0		2,370				2,370	19,495
Miscellaneous	0					5,224	5,224	20
<b>Total Revenue</b>	<b>78,392</b>	<b>17,050</b>	<b>4,976</b>	<b>2,626</b>	<b>12,500</b>	<b>56,724</b>	<b>172,268</b>	<b>174,740</b>
<b>Expenses:</b>								
Salaries, Taxes & Benefits	77,490	3,818	2,898	0	5,808	45,784	135,798	131,410
Other Direct Expenses	200	9,951	924	693	2,500	15,260	29,528	32,936
Administrative Allocation	1,846	969	269	66	1,170	(4,320)	0	0
<b>Total Expenses</b>	<b>79,537</b>	<b>14,738</b>	<b>4,091</b>	<b>759</b>	<b>9,478</b>	<b>56,724</b>	<b>165,326</b>	<b>164,346</b>
<b>Operating Surplus/(Loss)</b>	<b>(1,145)</b>	<b>2,312</b>	<b>885</b>	<b>1,867</b>	<b>3,022</b>	<b>0</b>	<b>6,942</b>	<b>10,394</b>
Interest Income							0	0
<b>Net Operating Surplus/(Loss)</b>	<b>(1,145)</b>	<b>2,312</b>	<b>885</b>	<b>1,867</b>	<b>3,022</b>	<b>0</b>	<b>6,942</b>	<b>10,394</b>

## CONSERVATION CONVERSATION

***By Kacey Weber, PCSWCD Executive Director***

---

Last year, the focus of our “*Conservation Conversation*” article was growth. This year, I would like to talk about change. In 2024, we celebrated our 80th year working for and with the people of Piscataquis County. Our programs and services provide information and skill-building opportunities to landowners, farmers, foresters, road and lake associations, municipalities, businesses, schoolchildren, teachers, families, and more. Since our inception in 1944, we have been helping to protect and sustainably manage our county’s natural resources. In 80 years we have known a considerable amount of change - in our natural environment, with the partners we work with, and within our own organization. In 2024, we said goodbye to Sarah Robinson, who served 6 years as Executive Director of the PCSWCD. Sarah made a lasting impact on our District, in our communities, and on positive change in Piscataquis County. Her strong and steady leadership paved the way for us to experience many new and exciting ventures such as our Stream Restoration work with The Nature Conservancy, the growth of our in-school education programming, the development of our Williamsburg Forest Community Forest and much more. We thank Sarah for her service and for all of her exceptional work.



PCSWCD Board of Supervisors selected me to serve as Executive Director after I served as Education Coordinator for 11 years. I am ready to take on the responsibilities of leading the Piscataquis Soil and Water Conservation District - working with constituents, exploring and expanding opportunities for conservation in Piscataquis County, and managing the District’s talented and capable staff. My advancement to the Executive Director role created an opening for an Education Coordinator and we are pleased to announce that we have hired Dustin Small to serve in that role. We are thrilled to have Dustin

as part of the team, and we know you all will enjoy all the changes he brings to this role! Our District also welcomed two new Board members in 2024, Arthur Wilkins and Alani Worden, both of Milo. See page 2 of this report to see a complete list of our Board and staff.

We also experienced changes at our community forests, the Law Farm Nature Trails and the Williamsburg Forest. Thanks to grants received, we were able to significantly improve access and infrastructure at these properties. Please take a moment to read about what we have been able to accomplish at our community forests in the Education Overview article on page 7. A noteworthy change on the horizon is that at the very end of 2024, we learned that we have received a Recreation Trails Program grant, which will help fund the construction of a connector trail from the Williamsburg Forest to Appalachian Mountain Club (AMC)’s trails in Barnard, ME, which opens up doors for increased recreational and educational opportunities! As we reflect on change and all of the triumphs and challenges that come from it, my goal as Executive Director is to NOT change the high-quality offerings that our District brings you all year after year. Our team is working hard to ensure that you all have access to resources that will help you best care for your land, develop new skills, and help you enjoy this beautiful county we live in. We hope you enjoy reading all that we have been working on and plan to offer in 2025.

~ Kacey Weber,  
Executive Director



# **PROUTY AUTO BODY**

COLLISION REPAIR SPECIALISTS  
with over 45 years of experience!

We Repair Any Make or Any Model

All collision repairs guaranteed!

We work with ALL insurance companies.

Hertz rental cars available.

## **Find us at**

26 Summer Street

Dover-Foxcroft, ME 04426

Phone: 564-8353

1-800-464-8353

Fax: 564-3426

E-mail: [proutyautobody@proutyautobody.com](mailto:proutyautobody@proutyautobody.com)

DENNIS BRAWN, JR., Proprietor

**[www.proutyautobody.com](http://www.proutyautobody.com)**

**SPOTLIGHT ON OUR PARTNERS:  
Maine Tree Farm Program: PCSWCD Becomes a  
Maine Tree Farm Program Stewardship Hub  
Host!**

***By Kayci Willis, Forest Programs Manager,  
Maine TREE & Maine Tree Farm Program  
Coordinator***

---

If you've visited a Piscataquis Soil and Water Conservation District (PCSWCD) property, you may have seen a diamond-shaped Tree Farm sign and wondered, "What is a Tree Farm?" These signs showcase membership in the Maine Tree Farm Program. The Maine Tree Farm Program is a 501(c)3 nonprofit organization that promotes responsible forestry while offering support, education, and community to Maine's family forest owners. The mission of the Maine Tree Farm program is to help woodland owners realize the full potential of their woods while sustainably providing forest products and other woodland benefits such as clean water, habitat for wildlife, and recreational opportunities. The Tree Farm diamond is the sign of good forestry. It means the property is managed sustainably and responsibly. The Maine Tree Farm Program ensures this through its nationally recognized Sustainability Standards. The Standards of Sustainability are guidelines that support forest health and help landowners manage their wooded areas responsibly. They ensure landowners can make the most of natural resources while protecting the environment.



The PCSWCD has partnered with the Maine Tree Farm Program to become a Stewardship Hub Host. Established in 2020, Stewardship Hubs are local networks of forest landowners who connect regularly to share and discuss sustainable forestry practices in their region. The Maine Tree Farm Program supports Hub Hosts in offering educational opportunities and resources to interested landowners. As a result of this partnership, the Maine Tree Farm Program will create a StoryMap that highlights the Williamsburg Forest and its exemplary forest management practices.

PCSWCD is thrilled to be partnering with the Maine Tree Farm Program and promote how folks can enroll their land, benefit from the program, and be part of an extensive network of knowledgeable, sustainability-minded landowners. Keep an eye out for 2025 Maine Tree Farm Stewardship Hub programs offered by Maine Tree Farmers around Maine, including the Piscataquis County Soil and Water Conservation District!



## 2024 EDUCATION OVERVIEW

**By Kacey Weber, PCSWCD Executive Director**

---

2024 was a successful year for the Piscataquis County Soil and Water Conservation District. Our dedicated staff delivered programs and services designed to address natural resource concerns identified by local citizens and natural resource agencies. These concerns were mitigated through the combined efforts of the PCSWCD and our many conservation partners through workshops, programs, outreach events, shared resources, and technical service. In 2024, our programs alone reached well over 1,400 constituents. In the past year, we offered 20 different educational workshops and events, along with countless in-school programs and field trips, which focused on environmental topics such as wildlife, forestry, land management, soil health, and water quality. Not captured in those numbers are the people we reach through our website and social media channels, which provide a variety of educational resources. Our workshops covered topics in invasive species, land management, mushroom cultivation, foraging, pond construction, chainsaw safety and more. Each one of our workshops was filled to capacity and offered participants new ideas on how to manage their land sustainably, produce their own food, become environmental stewards and be prepared for emerging concerns impacting natural resources.



Also not captured in the number of people served are visitors to our community forests, Williamsburg Forest in Williamsburg, Maine and the Law Farm Nature Trails in Dover-Foxcroft, Maine. These community forests combined offer approximately 400 acres of public access land. Most PCSWCD events and workshops are held at these sites, allowing us to not only educate the public about natural resource conservation



practices, but demonstrate them. In 2024, PCSWCD received grants from the Maine Community Foundation and the John Sage Foundation, which helped with infrastructure needs and enhancement at both the Williamsburg Forest and the Law Farm. These grants helped us repair and upgrade access roads and parking areas at both properties. Additionally, we received funding through these grants to contract with a local landscaper to implement seasonal land maintenance at each property. This piece had the biggest impact as it outsourced the enormous responsibility of land management, resulting in beautifully maintained and welcoming trails and public spaces, and ultimately an increase in visitors to each forest. District staff, volunteers, and PCSWCD Board members also logged hours clearing trails, installing bog bridging, installing game cameras, and procuring and installing a new privy at the Law Farm. PCSWCD also worked with students on special projects at the Law Farm, which included trail upgrades, maintaining our educational apple orchard, and more. We worked with Thompson Free Library to install a story walk at the Law Farm Nature Trails, which was enjoyed by the public and school groups.



PCSWCD has built successful year-round youth programming, which engages youth through fun, hands-on learning in multiple natural resource areas that include forestry,

## ***Education Overview Continued from page 7...***

soils, wildlife, water quality, and current ecological issues. Since 2023, our educational services have been supported financially by a grant from the Onion Foundation. This financial support helped us start to meet the demand for programming and increase our outreach to schools, youth organizations, and more. Some of our most successful youth programs in 2024 have been our Teen Wilderness Expedition program, our Trout in the Classroom program, our stream study programs and our work with the new Natural Resource program students at the TriCounty Technical Center. We celebrated our 10th year of Teen Wilderness Expedition, which is a 3-day, 2-night trip for youth ages 12-16. Through this program, youth experience the beauty and unique natural qualities of Piscataquis County through outdoor recreation and learning, and enjoy a stay at the Appalachian Mountain Club's Wilderness Lodges. Our Trout in the Classroom program expanded in 2024 and was offered in both SeDoMoCha Elementary School and Piscataquis Community Elementary School. A new Natural Resource concentration was formed in 2024 at TriCounty Technical Center and our District has worked with those students on special learning projects such as trail maintenance, soil health, apple production and invasive species. Our work continues through our Piscataquis Environmental Education Collaborative (PEEC), which was established in 2022 in an effort to offer diverse educational opportunities in rural Maine. PEEC members include representatives from the Appalachian Mountain Club (AMC), Natural Resource Education Center (NREC) and Rural Aspirations Project (RAP). We all work collaboratively on youth programs and initiatives and by banding our expertise together, we can expand educational opportunities and student aspirations within all Piscataquis County schools. PCSWCD sees the demand for programming in schools increase every year and our long-term goal is to build sustainability for these programs by increasing our funding with the state and county.



2024 Tree & Plant Sale fundraiser was our biggest sale to date. We worked with 6 local farms and businesses to offer organic trees, perennials, annuals and homesteading products. Purchasing and promoting local agricultural goods helps our economy. Additionally, this sale encourages planting native perennials and pollinator plants, benefitting native species and enhancing soil health. PCSWCD also sold over 970 brook trout through our annual Trout Sale. Purchased brook trout were then stocked in local residents' private ponds, providing food, recreational opportunities and enhancing local ecosystems.

PCSWCD works with Maine Lakes to deliver the LakeSmart Program and serve as a LakeSmart HUB in Piscataquis County. The LakeSmart program is a free service offered to waterfront property owners and is designed to help people address non-point and point source pollution on their properties. The service consists of an evaluation, which is followed-up with a full report, which includes resources and recommendations.





**Education Overview Continued from Page 8...**

Additionally, the LakeSmart program includes a reward to exemplify "lake-friendly" properties. 2024 was a huge year for this service as we completed 20 LakeSmart evaluations, presented to 2 lake associations and helped facilitate educational programs such as invasive aquatic plant paddles and gravel roads workshops. Our goal is to continue the momentum we built in 2024 into 2025. The LakeSmart program is invaluable to the residents of the county, as Piscataquis County is made up of 416 square miles of ponds and lakes, with Mooshead Lake being the largest in the state.

The leadership and stewardship provided by PCSWCD staff and volunteer Board of Supervisors improves our county's natural resources and leaves a rich legacy for future generations. As we explore and see the pristine beauty of our county - all 2.54 million acres - we are reminded of the power of conservation that we have led for over 80 years and will continue to do so into the future.

**THANK YOU TO OUR GRANTORS IN 2024:**



Maine  
Community Foundation



The Nature Conservancy  
Maine



Kiwanis

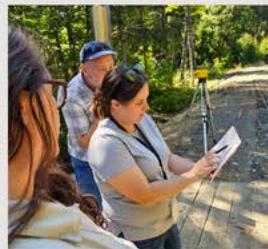
ONION  
FOUNDATION



Thanks for learning  
with us in 2024!



PISCATAQUIS COUNTY  
SOIL & WATER  
CONSERVATION DISTRICT



# ROWELL'S

CAR WASH  
SALES & SERVICE  
GARAGE

207-564-3434

[www.rowellsgarage.com](http://www.rowellsgarage.com)

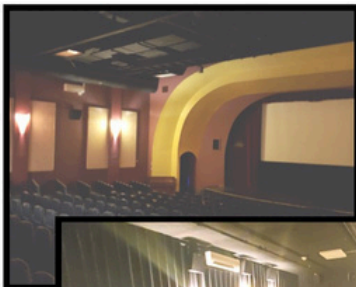
191 E. Main St. Dover Foxcroft, ME



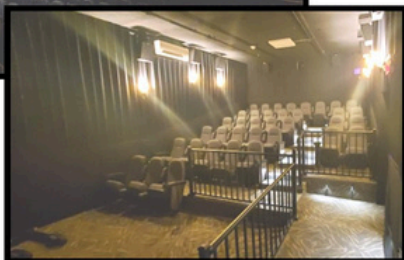
***20 East Main St. Dover Foxcroft***

***(207)564-8943 CenterTheatre.org***

***Open 7 days a week with movies, private rentals, live theater, concerts, comedy, and more!!***



Now with 2 theaters providing twice as much fun on a rainy day or any day of the week!



**Private rentals start at just \$85**

## **NATURAL RESOURCES CONSERVATION SERVICE UPDATE**

***By Carl Bickford, District Conservationist***

---

On December 3rd, 2024, the Piscataquis County Soil and Water Conservation District and NRCS conducted the annual Local Working Group meeting in Piscataquis County. The group meets at least one time per year to discuss natural resource priorities throughout Piscataquis County and make recommendations to NRCS on where Farm Bill funding should be directed to meet the environmental challenges in the county. These meetings are a chance for you to have a voice in directing the federal funds that come into your county, from the Farm Bill, through this office, and help protect your natural resources. If you have any interest in attending the Local Working Group meetings, please reach out to PCSWCD Executive Director, **Kacey Weber**, [katherine.weber@piscataquisswcd.org](mailto:katherine.weber@piscataquisswcd.org).

I was hired as District Conservationist to replace Seth Jones who moved to a new position at the USDA NRCS State Office. I was a planner in Piscataquis for years and most recently, I served as the USDA NRCS Regional Forester covering the western half of Maine for the NRCS. I am looking forward to working with folks in Piscataquis and help you all help your land.

During the spring of 2024, we were working on processing just over \$1.2 million dollars of conservation money, over 30 contracts and across 4 NRCS funding programs. We are currently working through 2025 applications and getting them ready to be ranked for 2025 contracting. We are very hopeful that this year will allow us to do even more work with our participants to help protect and enhance this beautiful county. We can be contacted at the office at 207-564-2151 or you can email me at [carl.bickford@usda.gov](mailto:carl.bickford@usda.gov). You can also reach out to Caley Rentz, Soil Conservationist, [caley.rentz@usda.gov](mailto:caley.rentz@usda.gov), with questions on how to apply to programs. We are looking forward to working with you.

Best, Carl Bickford, District Conservationist

## **STREAM RESTORATION PROJECT UPDATE**

***By Caitlin Maguire, PCSWCD Stream  
Restoration Project Manager***

---

As 2024 comes to a close, the Piscataquis County Soil & Water Conservation District (PCSWCD) reflects on a year of dedicated conservation work, community engagement, and critical partnerships that have strengthened the resilience of our county's natural resources. This year's stream restoration efforts have not only enhanced aquatic habitats, but also reinforced infrastructure, expanded landowner support, and fostered a deeper connection between the community and the environment.

The year began with spring and summer trip report season, where we conducted initial evaluations for 12 different aquatic organism passage (AOP) sites across the county. These trip reports provided valuable insights into stream connectivity, erosion concerns, and the structural integrity of road-stream crossings. Each report helped establish project priorities, ensuring that our restoration efforts align with the ecological needs of key species such as Atlantic salmon and Eastern brook trout, while also improving infrastructure resilience for landowners.

This season also brought significant public outreach. Our trout release program with Guilford and SeDoMoCha schools allowed students to raise and release 300 brook trout fry at Brown's Mills Park, providing hands-on learning about aquatic ecosystems and conservation. I participated in the Green Jobs Fair and Forest Heritage Days, engaging with landowners, foresters, and community members about NRCS programs and available funding opportunities. Additionally, PCSWCD hosted workshops on Stream Smart principles, equipping landowners with knowledge on habitat restoration, erosion control, and sustainable stream crossings.

### ***Stream Restoration Continued from Page 11...***

Fall brought construction season, the most active period of the year. I am proud to report that we successfully completed nine AOP projects, restoring 5.78 miles of aquatic habitat, while simultaneously improving infrastructure resilience to flooding and storm events. I was present at each construction site, monitoring water quality, managing sediment control, and ensuring that all best practices were followed. Using electrofishing and protective barrier netting, we relocated aquatic species from active construction areas, minimizing environmental impact. These projects were made possible through strong partnerships with The Nature Conservancy (TNC), NRCS, and local landowners, demonstrating the power of collaborative conservation. In total, the AOP projects constructed in 2024 had an estimated cost of \$683,931.

As construction concluded, survey season began. We conducted engineering assessments for 11 potential AOP sites across Piscataquis County. These surveys provided essential data on stream conditions, land use impacts, and habitat connectivity, helping determine the best management practice for future stream crossing engineer designs. Detailed environmental and cultural mapping efforts identified conservation priorities, including areas critical to Atlantic salmon recovery. The information gathered during this phase will set the stage for 2025 construction planning and funding applications, ensuring that upcoming projects meet both ecological and community needs.

With the successes of 2024 behind us, PCSWCD is preparing for an even more impactful year ahead. Trip report season will focus on evaluating another round of sites, continuing our efforts to prioritize and document key restoration areas. Survey season will involve assessments for potentially a dozen additional AOP sites, gathering critical data for 2026 project planning. Construction season will see the implementation of high-priority restoration projects, further improving aquatic connectivity, reinforcing infrastructure, and

supporting long-term conservation in Piscataquis County.

If you have any questions regarding Stream Restoration and AOP projects, please stop by the office or contact Caitlin Maguire, Stream Restoration Project Manager - 42 Engdahl Drive Dover-Foxcroft, ME 04426, Phone: (207) 965-5706 or via email at: [Caitlin.Maguire@usda.gov](mailto:Caitlin.Maguire@usda.gov).

#### ***Acknowledgments:***

We extend our sincere gratitude to our Board of Directors, project partners, and the community for their continued support. Every achievement this year was made possible by a shared commitment to conservation and stewardship. As we look ahead, we remain dedicated to strengthening Piscataquis County's natural resources and ensuring their protection for generations to come.

*This project was made possible through support provided by the Natural Resources Conservation Service (NRCS) and the Nature Conservancy (TNC), under the terms of the RECPP Agreement SUPPLEMENTAL-2306-A-1584. The content and opinions expressed herein are those of the author(s) and do not necessarily reflect the position of the policy of such agency or The Nature Conservancy, and no official endorsement should be inferred.*



Before (above) and After (below): AOP project for an Unknown Tributary to Long Pond on AMC land in T7 R9 NWP



## MAINE SOIL SURVEY UPDATE

***By Chris Mann, Ecological Site Specialist***

---

Throughout 2024, Natural Resources Conservation Service (NRCS) MLRA (Major Land Resource Area) soil survey staff consisting of soil scientists and ecologists implemented and assisted on many projects throughout the state of Maine and New England. These projects investigated dynamic soil properties and health, ecological site dynamics, and changing climate in the Northeast.

Soil survey staff worked alongside and supported several PCSWCD events to enhance soil science education and knowledge within the community. Staff participated at the Green Jobs Fair, demonstrating distinguishing soil properties such as texture and color. The Soil survey staff also assisted with many opportunities to provide soil science education outside the classroom with local area schools.

Soil survey staff contributed to advancing the Soil Climate Analysis Network (SCAN) and the Tribal Soil Climate Analysis Network (TSCAN) in Maine and across the Northeast. Currently, there are three TSCAN stations in Maine on tribal land. These stations collect and transmit soil and climate data which is used to support agricultural and land-use planning decisions. Annual maintenance on sensors was conducted at the three TSCAN stations in Maine, along with a TSCAN station in RI, two Scan stations in VT, and 2 SCAN stations in NH. MLRA soil survey staff prepared and presented a poster titled "Soil Climate Analysis Network in the Northeast: Capabilities and Capacity" at the National Soil Survey Cooperative Northeast Conference.

Soil survey staff continued collaborative efforts with the Maine Natural Areas Program (MNAP), MLRA soil survey staff continued assistance on the long-term ecological reserve monitoring (ERM) project. Support was provided through soil data collection and interpretation to provide complete soil profiles associated with each plot in the 2023 round of ERM sampling. This ongoing collaboration with MNAP provides valuable data to model and identify long-term changes to the health of Maine

soils and forests while also providing an opportunity for NRCS to further advance ecological site descriptions within Maine. NRCS ecological site descriptions are a site-specific tool that links both historic and current information on soil and plant relationships, site productivity, and site health while also identifying resource concerns and the underlying drivers. This serves as an incredibly valuable tool for landowners and land managers to access spatial and temporal site information and an opportunity to explore data driven approaches to sustainable land use decisions.

Across the Northeast, soil survey staff contributed to several dynamic soil property projects investigating soil and vegetation health in response to natural and anthropogenic disturbances. Staff completed training and projects investigating urban soils and sonar mapping of eelgrass for oyster bed restoration efforts. If you have any questions regarding soils or ecological information throughout Maine, please stop by the office or give us a call: 42 Engdahl Drive Dover-Foxcroft, ME 04426, Phone: (207) 564-2321 ext. 4016. You can also reach Christopher Mann (MLRA Soil Survey Leader) by email at: [Christopher.Mann@usda.gov](mailto:Christopher.Mann@usda.gov).





## H.A. Higgins & Son, Inc.

Robert Higgins, President

Foundations ● Earthwork ● Septic Systems ● Gravel ● Loam

Route 11A, 24 Main Rd.  
Charleston, ME 04422

(207) 285-3404 ● Cell: (207) 852-6499

hahiggins@ccmaine.net



TREELINE STORAGE

207-299-6613  
TREELINESTORAGE@GMAIL.COM



**HALEY'S  
INC.**

Transit-Mix Concrete

207-876-4412 • FAX 876-4421  
concrete@haleysinc.com

**Sangerville Concrete Plant**

**REDI-ROCK® OF CENTRAL MAINE**  
A Division of Haley's, Inc.  
**REDI ROCK** Retaining Wall Systems

PO Box 449  
165 Main Street  
Sangerville, Maine 04479-0449



Sebec Lake Association is engaged in the preservation and protection of the lake environment for current and future generations.

Learn more at <https://sebeclakeassoc.org/>.

Join us in taking care of one of the Piscataquis County's treasured resources!

**FARM SERVICE AGENCY UPDATE:**  
**By Scott Speck, County Executive Director**

The Farm Service Agency (FSA), located in the USDA Service Center in Dover-Foxcroft, is a branch of the United States Department of Agriculture. The FSA supports farmers, ranchers, and landowners through a variety of commodity, credit, and disaster assistance programs designed to stabilize and enhance our rural landscape. FSA is at the forefront of providing services the farming community has come to trust. The overall purpose of FSA is to complement agricultural operations in times of plenty and brace their operations during times of economic insecurity. You can obtain further information online at [www.fsa.usda.gov](http://www.fsa.usda.gov) and [www.farmers.gov](http://www.farmers.gov).

FSA welcomes you to come pick up pamphlets and brochures, but if you'd like face to face contact it's best to set up an appointment by contacting Madison at 207-474-8323 x2, or by email at [Madison.Thew@usda.gov](mailto:Madison.Thew@usda.gov)



**American Hardwoods**

Treasured for Generations™

**Lumbra Hardwoods Inc.**

**122 River Road**

**Milo, Maine 04463**

**207-943-7415**

[info@lumbrahardwoodsinc.com](mailto:info@lumbrahardwoodsinc.com)

**NREC** Natural Resource  
Education Center  
Moosehead Lake



**Connecting community  
to the natural world**

We are an all-volunteer organization with a mission to connect our community with nature. Our year-round programs foster a love for the outdoors and build environmental stewardship.

Learn more about our programs at [www.nrecmoosehead.org](http://www.nrecmoosehead.org)

**E. R. PALMER LUMBER  
CO. INC.**

**Offering:**  
**Hardwood Specialties**  
**Firewood - Certified, kiln-dried available!**  
**Custom Drying**  
**Sawdust**  
**& More! *Delivery available!***

**48 NORTH DEXTER RD  
(STATE HIGHWAY 23)  
SANGERVILLE, ME  
207-876-2725**

**WE BUY  
HARDWOOD  
LOGS!**

## PCSWCD 2024 Awards

Piscataquis County Soil and Water Conservation District awarded Billy London of William W. London & Son, Milo, ME, with our 2024 Cooperator of the Year award. This award exemplifies a Cooperator in Piscataquis County who has implemented exceptional conservation practices, invested time and energy into natural resource conservation, and showcased outstanding on-the-ground conservation efforts and overall excellence in sustainable management of the land. PCSWCD presented this award to Billy on Oct. 9th in Barnard at one of his bridge construction sites. For the full article about Billy London of William W. London & Son and this award, see our [Fall Cooperator Newsletter](#). Congratulations!



Photo: Billy London, third from left, stands on a bridge completed by his company William W. London & Son. The bridge is a completed NRCS AOP project on AMC land. Billy London of William W. London & Son was awarded PCSWCD's 2024 Cooperator of the Year award.

PCSWCD awarded Kim Merritt and Chuck Batdorf of Abbot, Maine with our 2024 Volunteers of the Year award. Each year, the Piscataquis County Soil and Water Conservation honors a volunteer who has helped us carry out our mission. Kim and Chuck have volunteered their time to help our District with program delivery, outreach, our annual Tree & Plant Sale and have offered their time and energy on countless occasions throughout the year. Thank you for your help and dedication, Kim and Chuck!



Photo: Chuck Batdorf (third from left) and Kim Merritt (4th from left) were awarded the PCSWCD 2024 Volunteers of the Year Award.

**STIHL** **DOVER** **Ariens**

**True Value**  
START RIGHT. START HERE.™

**BUILDING MATERIALS** **SMALL ENGINE REPAIR**  
**PAINT** **PELLETS**  
**HARDWARE** **HOUSEWARES**  
**TOOLS** **PLUMBING**  
**LAWN & GARDEN** **ELECTRICAL**

69 East Main St. Dover-Foxcroft (207) 564-2274  
doverttruevalue@gmail.com www.doverttruevalue.com

**Ellis**  
Forest Management & Greenhouse/Nursery

Located: 218 Old Town Road  
Hudson, Maine, 04449

From a single plant to 1000's of acres  
We can grow it or manage it

Tel: (207) 327-4674 www.ellisnursery.com

Forestry Management Greenhouse/Nursery

PISCATAQUIS COUNTY  
**SOIL & WATER**  
CONSERVATION DISTRICT

**Fruit Tree**  
*Pre-Sale*

**Apple & Pear**  
**Trees available!**

---

**This PRE SALE is online**  
from  
**January 30th - February 13th**

**LIMITED  
QUANTITY!**  
Pick up in  
the Spring!

Reserve your trees now and pick up at the Tree & Plant Sale Pick-up Day - May 15th 4:30-6:30pm, Law Farm Nature Trails, Dover-Foxcroft!

Place your orders online at  
[www.piscataquisswcd.org](http://www.piscataquisswcd.org)



## PCSWCD'S ANNUAL APPEAL: HOW YOU CAN HELP!

Our mission is to build resilient, sustainable farms and forests through education, technical services, demonstration and stewardship and we need your help to accomplish it. We provide information and educational programs to farmers, landowners, and interested citizens and most importantly, we provide programs for the children of Piscataquis County about the natural resources around them. We are good at what we do, but we need your help. If we have more, we can do more.

PCSWCD has been working in our communities for 79 years. With the funding support we receive from the state and county, we have been a consistent force for positive progress in our region. PCSWCD needs partners in the fight for conservation. We do this because we care about the future of Piscataquis County. That is what we do. Will you help us?

Please consider a donation to become a PCSWCD Conservation Champion! At this page - [www.piscataquisswcd.org/support/](http://www.piscataquisswcd.org/support/) - you will see targeted ways you can give to the District. Any gift, any size, makes a BIG difference. We appreciate your consideration and support! It is an exciting time in Piscataquis County, and we are ready to keep serving our community with our conservation efforts!

Please send donations  
to PCSWCD 42 Engdahl  
Dr, Dover-Foxcroft ME  
04426

or

[https://www.paypal.com/donate/?  
hosted\\_button\\_id=DZFB95H9US3S8](https://www.paypal.com/donate/?hosted_button_id=DZFB95H9US3S8)



THANK YOU FOR YOUR SUPPORT!



Ada Vilches, USDA NRCS  
 Adam Bagley, DACF  
 Alaina Kresovic, USDA NRCS  
 Alexandra Conover Bennett  
 Aline Lavelle  
 Alicia Dickson \*  
 Allison St.Jean  
 Amber Hines  
 Amelia Robinson  
 Amy Polyot of PCSWCD  
 Andrew Robinson  
 Angela Fournier  
 Andy Shultz  
 Antonio Hector  
 Appalachian Mountain Club \*  
 Bangor Daily News  
 Bangor Public Health  
 Becca Lory  
 Ben Cookson, Shaw Road Farm \*  
 Ben Naumann, USDA NRCS  
 Bissell Brothers Brewing \*  
 Bob Duchesne  
 Bob's Farm, Home & Garden \*  
 Boulter Photography \*  
 Brett Gerrish, Prentiss & Carlisle  
 Brian Keefe \*  
 Brian Roth, Maine Chapter  
 American Chestnut Foundation  
 Brownville Elementary School  
 Brownville Snowmobile Club  
 Carl Bickford, USDA NRCS  
 Carolyn Clark  
 Carolyn Ziegler, AMC  
 Catherine Hodson  
 Catherine Spolarich, MNAP  
 Casey Derhak \*  
 Center Theatre  
 Checkerberry Farm \*  
 Cheryl Gormley  
 Chris Dumont, Moosehorn Guide  
 Service  
 Chris Fife, Weyerhaeuser  
 Chris Reidy, USDA NRCS  
 Christian Fox, TNC  
 Chuck Hulsey, IF&W  
 Chuck Penney, NRCS  
 Chris Mann, USDA NRCS  
 Christine Cannon, Wildrose Flower  
 Farm  
 Cooperative Extension Tick Lab  
 Cooperative Extension Veterinary  
 Diagnostic Lab  
 Courty Lindsey  
 Corey Hill, Mountain View  
 Correctional Facility \*  
 CJ Walke, MOFGA  
 Claire Moore  
 D.Gordon Mott  
 Dan Perkins, DACF



## PCSWCD FRIENDS OF CONSERVATION

**\* Conservation Champions  
Donations of \$50 or higher**

Daniel Rosebush \*  
 Daria Reilly  
 Davinci Signs  
 David Dietz  
 Davis Conservation Foundation\*  
 Dawna Blackstone, Rural  
 Aspirations Project  
 Deborah Gould, Outdoor  
 Women Brand  
 Denise Hurst  
 Demonstration Forest  
 Volunteers  
 Destination Moosehead Lake  
 Diane Higgins  
 Donna Coffin  
 Don't Move Firewood Initiative  
 Doug Kane, Maine IF&W  
 Dover True Value Hardware  
 Store \*  
 Dwain Allen  
 Dyan McCarthy Clark  
 Dustin Small  
 Eastern Gazette  
 East Sangerville Grange  
 Eileen Bader Hall, TNC \*  
 Ellen MacMillan  
 Elisa Schine  
 Elissa Ballman, Maine Forest  
 Tick Survey  
 Elizabeth Bisson  
 Elizabeth Collett \*  
 Elizabeth Fralick  
 Elizabeth R Schecher

Emery Family in Memory of  
 George R. Emery \*  
 Emery's Meat Market \*  
 Emily Dickison  
 Emma Strong  
 Enfield Fish Hatchery  
 E.R. Palmer Lumber Co., Inc.  
 Eric Ogden \*  
 Evelyn Robertson  
 Forest Society of Maine  
 Foxcroft Academy  
 Friends of Baxter  
 Friends of Wilson Pond \*  
 Gabe LeMay, MFS  
 GA Jackson & Son  
 Garret De Visser  
 Gene Arsenault  
 Greg Ponte, Trout Unlimited  
 Haley's Inc.  
 Haley Ward  
 Halls Christmas Tree Farm  
 Heather Annis \*  
 Heidi Bunn, USDA NRCS  
 Heidi Tietenberg  
 Helios Horsepower Farm \*  
 Helping Hands with Heart \*  
 Indian Hill Trading Post \*  
 Jack McCarthy  
 Jackson Regenerational  
 Farm \*  
 Jake Maier  
 Janet Sawyer  
 Jay Wason, UMaine School  
 of Forest Resources  
 Jenna Cooper \*  
 Jennifer Elwell  
 Jennifer Herbert  
 Jennifer Nelson Simpson  
 Jensen Bissell \*  
 Jeremy Markuson, USDA  
 NRCS  
 Jessica Leahy, UMaine \*  
 School of Forest Resources  
 Jessica Mead  
 Jim Ferrante, MFS  
 Jon Blackstone  
 John Maclaine, DEP  
 John Petty  
 Joseph Dembeck  
 Joseph Kostusyko  
 Joseph Roy, ME IF&W  
 Joshua Dera, USDA NRCS  
 Kacey Weber  
 Karen Bennett  
 Kathleen Darling  
 Kathryn Gallant  
 Katrina Benjamin

Kass Urban-Mead, Xerces Society  
Katie Friedman, AMC  
Kay Johnson \*  
Kelly Sirimoglu  
Kent & Lynn Black \*  
Kim & Chuck Merritt  
Kirby Ellis, Ellis Forest  
Management \*  
Kiwanis of Dover-Foxcroft \*  
Korah Soll, Rural Aspirations  
Project  
Kris McCabe, IF&W  
Kylie Dow  
Lake Stewards of Maine  
Laura Maul  
Laurie Bowen, UMaine  
Cooperative Extension  
Lois Judge  
Logan Johnson, Maine TREE  
Lesley Fernow \*  
Lumbra Hardwoods Inc.  
Lynn & Jim Lubas  
Lynnae Chaput  
Maddie Eberly, Forest Stewards  
Guild  
Maine Agriculture in the  
Classroom  
Maine Association of  
Conservation Districts  
Maine Audubon  
Maine Bound  
Maine Chapter of the American  
Chestnut Foundation  
Maine Community Foundation \*  
Maine Department of  
Agriculture, Conservation &  
Forestry \*  
Maine Department of  
Environmental Protection  
Maine Department of Inland  
Fisheries & Wildlife  
Maine Forest Service  
Maine Forest Collaborative  
Maine Healthy Soils Program \*  
Maine Highlands Senior Center  
Maine Lakes  
Maine TREE  
Maine Woodland Owners  
Mandy Winne  
Maple Lane Farm \*  
Marcel Burch \*  
Marr Pond Farm \*  
Mary Smith  
Matt Boucher, State Soil  
Scientist  
Matt LaRoche  
Matt Walker, USDA NRCS  
Matthew Harvey \*  
MAYB TMRW \*  
Megan Hess  
Meghan Butler  
Melanie Ruark  
MicMac Farms

Michael McCaw \*  
Mike Pouch  
Milo Garden Club \*  
Milo Tradewinds \*  
Molly Ferrante \*  
Molly London  
Monson Arts  
Moosehead Marine Museum  
Moosehead Matters  
Natalia Erb  
NACD Forestry Notes  
Natural Resource Education  
Center (NREC)  
Neal Ross  
Nicole Rogers, UMaine  
School of Forest Resources  
Nick Butler, USDA Soil Survey  
North Branch Farm  
Northern Line Construction \*  
Onion Foundation \*  
Penobscot Indian Nation  
Penquis Valley Schools  
Piscataquis Community  
Elementary School  
Piscataquis Community High  
School  
Piscataquis County Chamber  
of Commerce  
Piscataquis County  
Commissioners  
Piscataquis County Economic  
Development Council  
Piscataquis Observer  
Piscataquis Regional YMCA  
Pleasant River Lumber \*  
Prouty Auto Body  
Ripley Farm \*  
RJ Horwitz \*  
Roberta Lavey  
Robert Weber  
Robin Raye  
Rod Hamel  
Rolling Thunder  
Rowell's Garage \*  
Rural Aspirations  
Sam Brown  
Sam Heffner, Maine Forest  
Ranger  
Sarah Bixler \*  
Sarah Curtis  
Sarah Haggerty, Maine  
Audubon  
Sarah Robinson  
Sarah Vogel  
Scott Speck, FSA  
Sean Fraver, UMaine School  
of Forest Resources  
SeDoMoCha School  
Seeds LLC \*  
Seth Jones, USDA NRCS  
Seth Ostrosky  
Shane Barker  
Shaw's Dover Foxcroft \*

Sheila Ashburn, Small  
Business Consulting  
Six Eight Photography \*  
Steph Perkins, AMC  
Steve Tatko  
Stutzman's Farm  
Sue Mackey Andrews  
Susan Gallo, Maine Lakes  
Taylor Dow, T.Dow  
Photography \*  
Terri Coolong  
Teresa Brzustowicz  
Thompson Free Library \*  
The Commons at Central  
Hall  
The Nature Conservancy \*  
Three River's Kiwanis \*  
Tim Obrey, Maine IF&W  
Tina Hoppe  
Toby & Cynthia Hall \*  
Tom Klak, American  
Chestnut Foundation  
Tom Gilbert, DACF  
Town of Dover-Foxcroft  
Town of Greenville  
Thomas Schmeelk, DACF  
Trailside Gardens \*  
Trisha Smith, UMaine  
Cooperative Extension  
USDA Farm Service Agency  
USDA Natural Resources  
Conservation Service  
University of Maine  
Cooperative Extension  
UMaine School of Forest  
Resources  
Victoria Flynn  
WABITV5  
Whetstone Pond  
Association  
Widdershins Farm LLC  
William London & Son \*

thank  
you!

## 2025 Events & Workshops Calendar

Individuals, students, families and organizations are encouraged to get involved in conservation efforts by participating in our programs. We can tailor programs to the needs of your school, club or civic organization and we also offer CEUs for municipal workers, trades and businesses through several of our workshops. Mark your calendars!

### February

**Fruit Tree PRE-SALE** *online ordering open Jan 30th-Feb 13th*

**Maple Sugaring Workshop** at *Tupper & Friends Maple, Cornville, ME*

*February 15th 10am-12pm*

### March

**Fly Fishing Film Festival**

*March 7th-8th, Dover-Foxcroft*

**Tree & Plant Sale Ordering Open** *March 10th-May 1st*

**Trout Sale Ordering Open** *March 17th-May 14th*

### April

**Mushroom Inoculation Course**, Details TBD

### May

**Apple Tree Top-Working Workshop** *May 3rd*

*Parkman ME*

**Bird Walk** at *Law Farm Nature Trails with Maine Audubon*

*May 17th 8am-10am*

**PCSWCD Annual Tree & Plant Sale Pick Up!** *May 15th at Law Farm, 4:30-6:30pm*

**Trout Sale Pick Up**, *May 21st USDA Service Center DF 12PM*

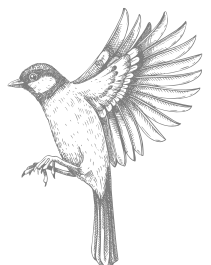
### June

**Mushroom Identification Workshop** *June 12th 1:30pm*

*Thompson Free Library, Dover-Foxcroft*

**Invasive Plant Workshop**

*Monson, Details TBD*



## July

Teen Wilderness Expedition at AMC's Gorman Chairback Lodge, July 15th-17th

## August

Foraging at Williamsburg Forest, August 9th 10-12pm or 1-3pm

## September

Cider Pressing with East Sangerville Grange, September 14th, East Sangerville Grange

Women's Chainsaw Safety Course

at Williamsburg Forest, September 27th & 28th

## October

Green Jobs Fair Details TBD

## November

Holiday Mini Photo Shoot at the Law Farm Nature Trails, Details TBD

## December

Local Working Group Details TBD

### Technical Services

**LakeSmart:** This free program is available to waterfront property owners looking to protect water bodies from damaging soil erosion. PCSWCD is a hub for LakeSmart, sharing watershed knowledge and technical capacity to support lake association volunteer programs and educate homeowners about Nonpoint Source (NPS) Pollution and remediate NPS pollution sources in the hub's lake shore lands. Call or email Kacey at the PCSWCD FMI.

### Education & Outreach

Is your school, club or youth organization interested in learning more about natural resources? The PCSWCD has a fantastic hands-on presentations that we want to share with you! For more information or to learn with us in the outdoors contact Dustin at the PCSWCD.

USDA Service Center, 42 Engdahl Drive, Dover-Foxcroft, ME 04426

Visit our website! [www.piscataquisswcd.org](http://www.piscataquisswcd.org) Follow us on Facebook!

[www.facebook.com/www.piscataquisswcd.org](https://www.facebook.com/www.piscataquisswcd.org)

Phone: (207) 564-2321 ext. 3 Email: [info@piscataquisswcd.org](mailto:info@piscataquisswcd.org)

Check us out on instagram! [#piscataquiscountyswcd](https://www.instagram.com/piscataquiscountyswcd)

### **Visit our Public Lands!**

**Law Farm Nature Trails located on Lee Cemetery Rd**

**Dover-Foxcroft, ME**

**Williamsburg Forest in Williamsburg Twshp**



**Our mission is to build resilient, sustainable farms and forests through education, technical services, demonstration and stewardship.**

# PISCATAQUIS COUNTY *Maine*

*It's Time*  
TO TAKE  
YOUR  
BUSINESS  
TO THE  
*Next Level*

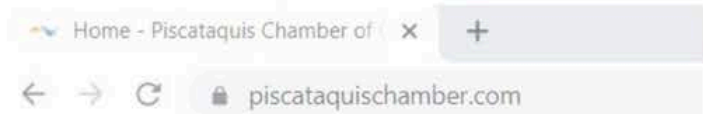


*chamber*

# MEMBERSHIP

Piscataquis  
Chamber of Commerce

joining is  
*easy as*  
1,2,3!



HOME OUR CHAMBER FOR OUR VISITORS FOR OUR LOCALS **Piscataquis Chamber of Commerce** MEMBER CENTER BECOME A MEMBER! CHAMBER BUCKS CONTACT US

- 1) Visit [piscataquischamber.com](http://piscataquischamber.com) to learn about our chamber, and click **MEMBER CENTER** for information on member benefits.
- 2) Next, click **BECOME A MEMBER** to view membership levels, options and pricing, and to submit your application.
- 3) Pay for your first year online or request an invoice. You'll get a call from the director to discuss your specific needs and to determine how the chamber can best support you.

**Join by March 1st for inclusion in this year's Relocation & Visitor's Guide!**

*why* join? .... We're glad you asked.

The chamber exists for YOU! Our purpose is to promote, protect and provide vital support to business owners within the borders of Piscataquis County.

Membership to the Piscataquis Chamber is KEY to taking your business to the next level. Call us for more information!

#### CONTACT US

207-564-7533 / Office  
207-299-8196 / Director Denise Buzzelli / Mobile  
[info@piscataquischamber.com](mailto:info@piscataquischamber.com)